



# Aletsch Glacier and the Rocks around it

!

-Ocson Reginald Cocen, Lea de March, Shungui  
Deng, Marc Gradel, Thanmaya Arunkumar

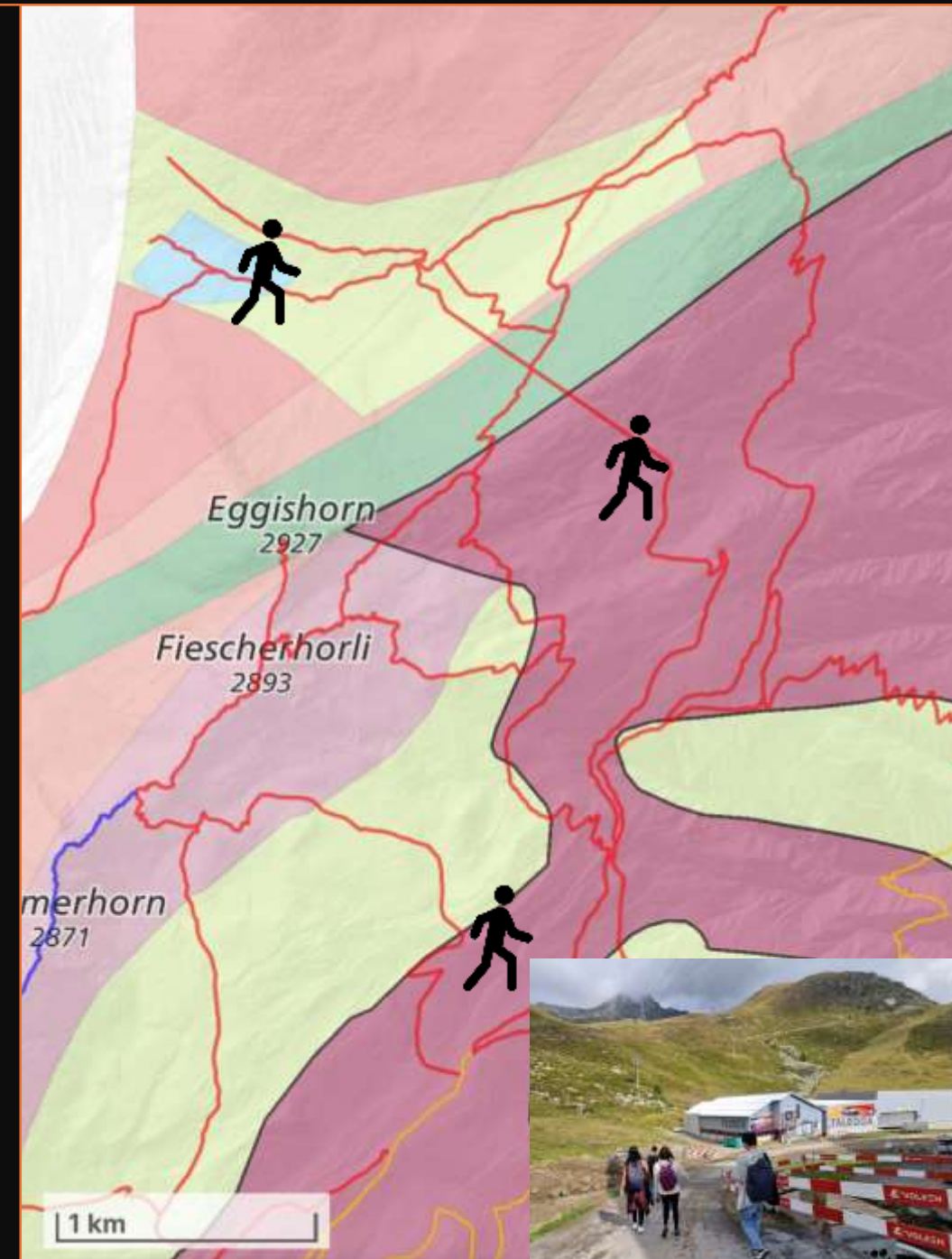
# Our Journey

- To Maerjelensee from Fiesche
- Observed:
  1. Gouge
  2. Rock Faults
  3. Rock offsets
  4. Abrasion and Polishing
  5. Glacier Tribology



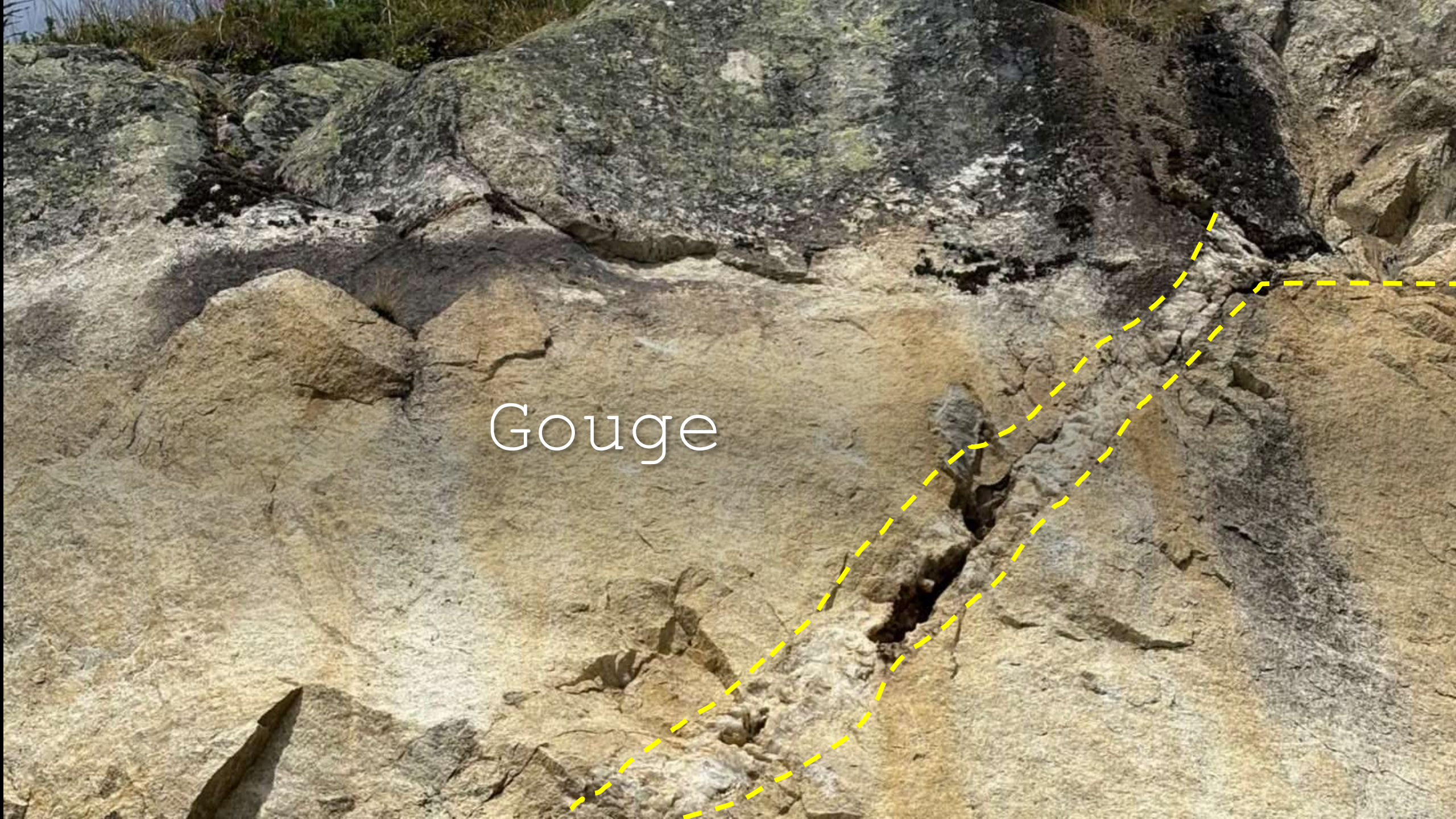
# Geological Composition

1. Igneous rocks:  
Coarse crystalline  
rocks - quartz &  
mica.
2. Silt and sand



Gouges



A photograph of a rock face showing a geological feature. A dashed yellow line highlights a narrow, elongated opening in the rock, which is a gouge. The rock surface is textured and shows various shades of grey, tan, and brown. The word "Gouge" is written in white text over the rock face.

Gouge

# Our Journey

- To Maerjelensee from Fiesch
- Observed:
  1. Gouge
  2. Rock Faults
  3. Rock offsets
  4. Abrasion and Polishing
  5. Glacier Tribology



# Rock Faults



# Regional Scale Faults





F  
A  
U  
L  
T  
S  
  
B  
Y  
  
G  
L  
A  
C  
I  
E  
R





**CASE 1**

A  
B  
R  
A  
S  
I  
O  
N



C  
A  
S  
E  
-  
2



## Comparison:

### 1. Debris :

Case 1



Case 2



### 2. Exposure time

#### Case 1:

Glacier abrasion & polishing  
+ wind erosion + rain  
erosion/corrosion + moss  
growth

#### Case 2:

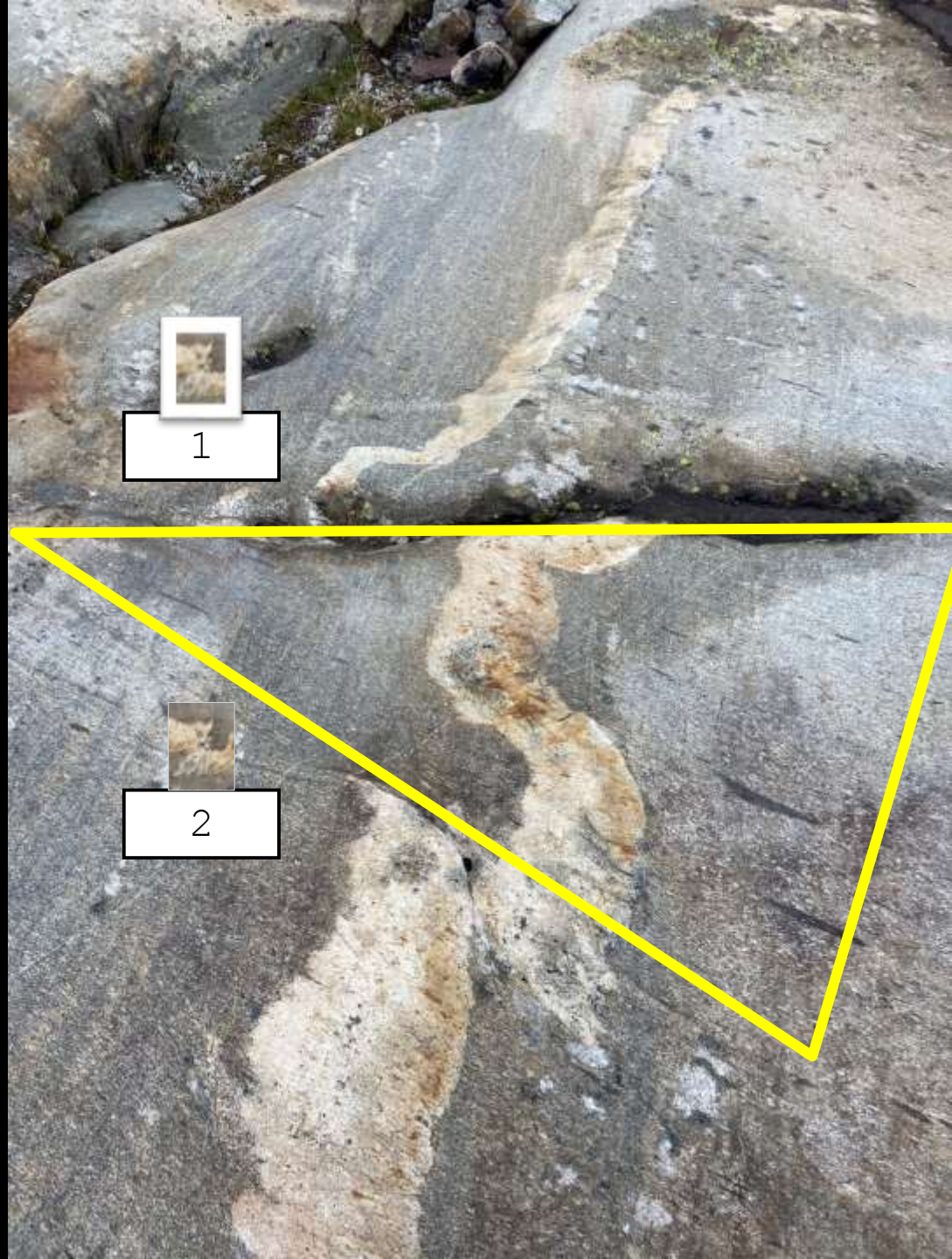
Glacier abrasion & polishing



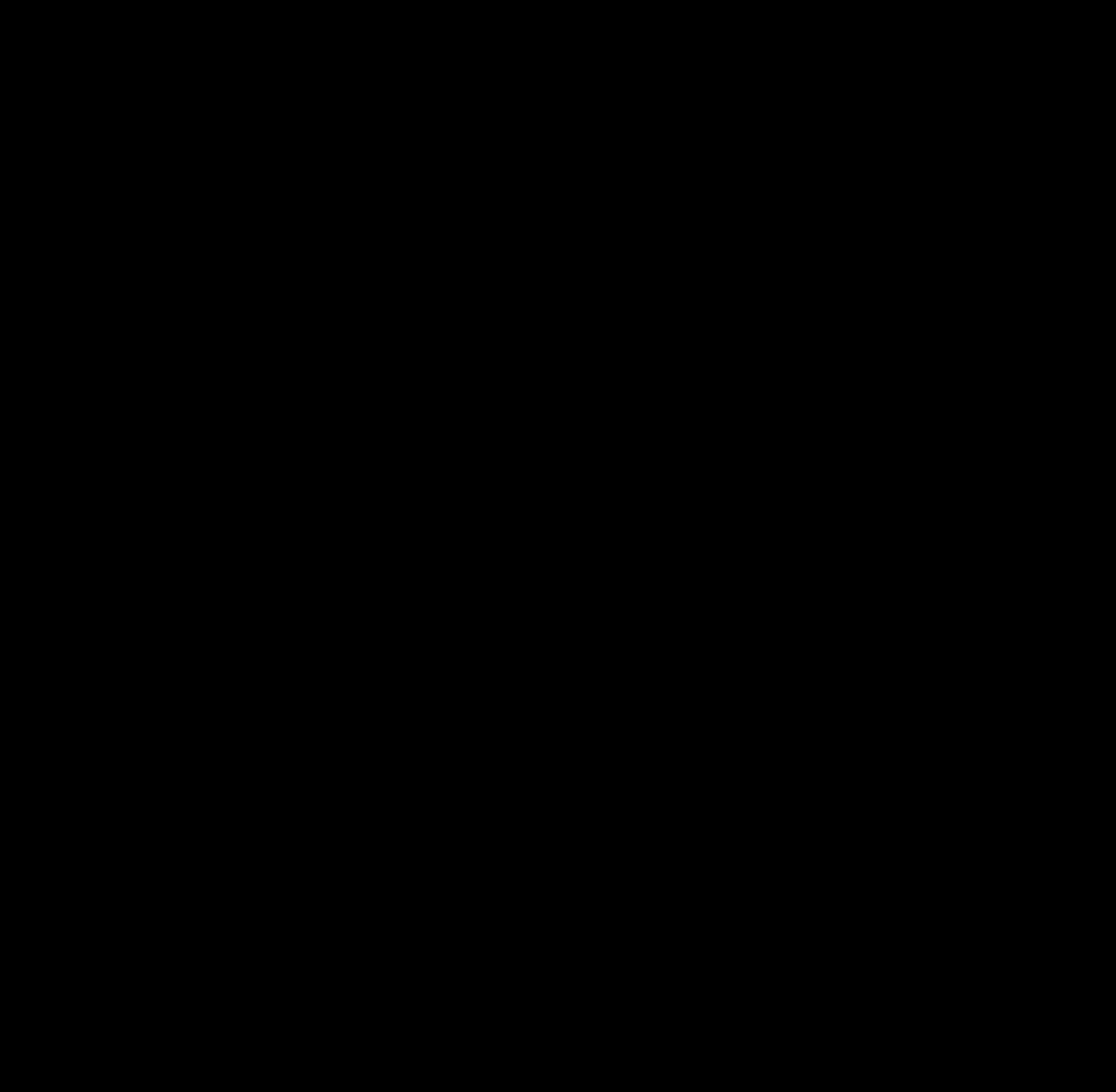
A large, smooth, light-colored rock formation, possibly a glacial errand, is the central focus. The rock surface is marked by several distinct, roughly parallel fault lines or striations that run across it. The background is a dark, craggy slope of rock. The text "Rock Faults near the Glacier" is overlaid in a white, monospaced font in the center of the image.

Rock Faults near  
the Glacier

# Conjugate Faults



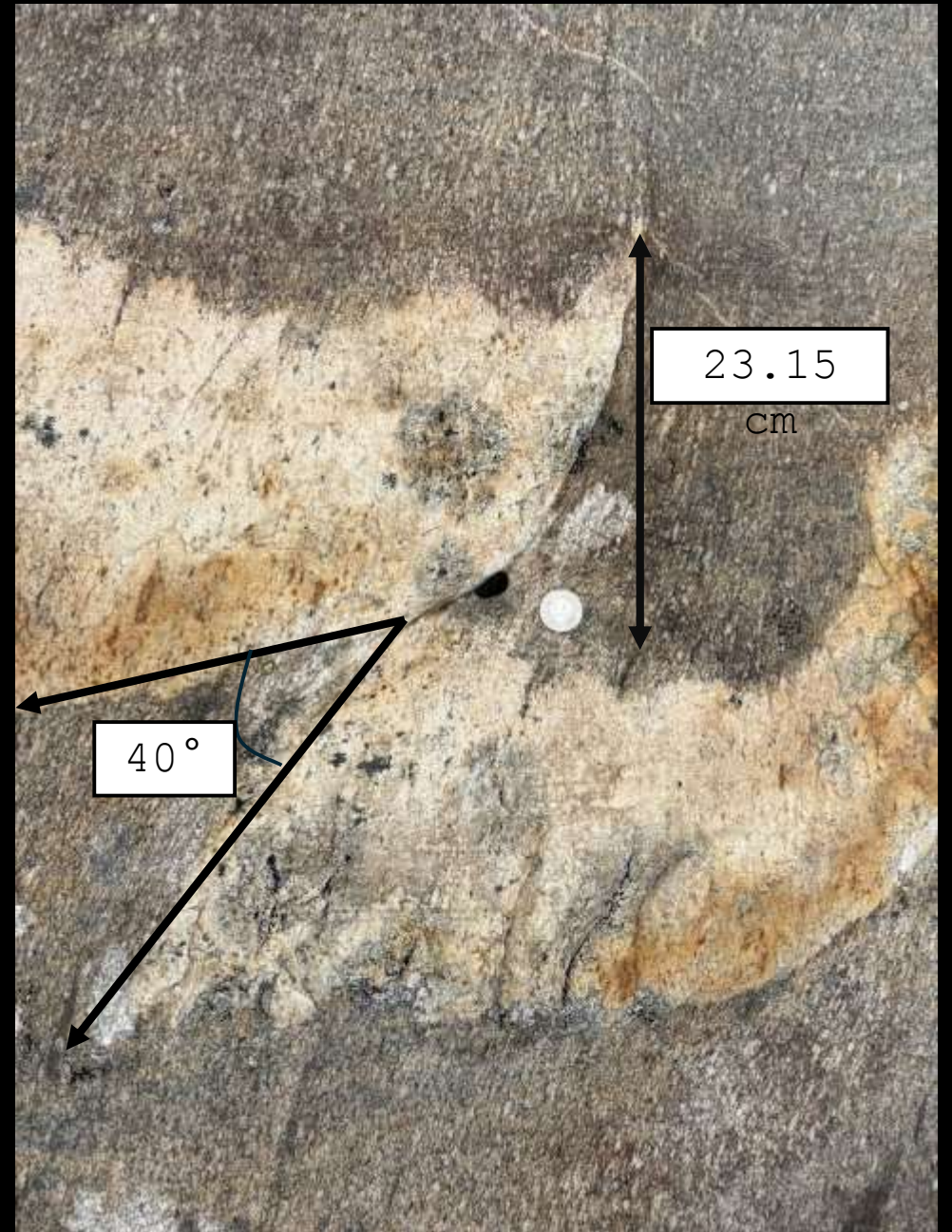








23.22 mm



23.15

cm

40°

One More  
example



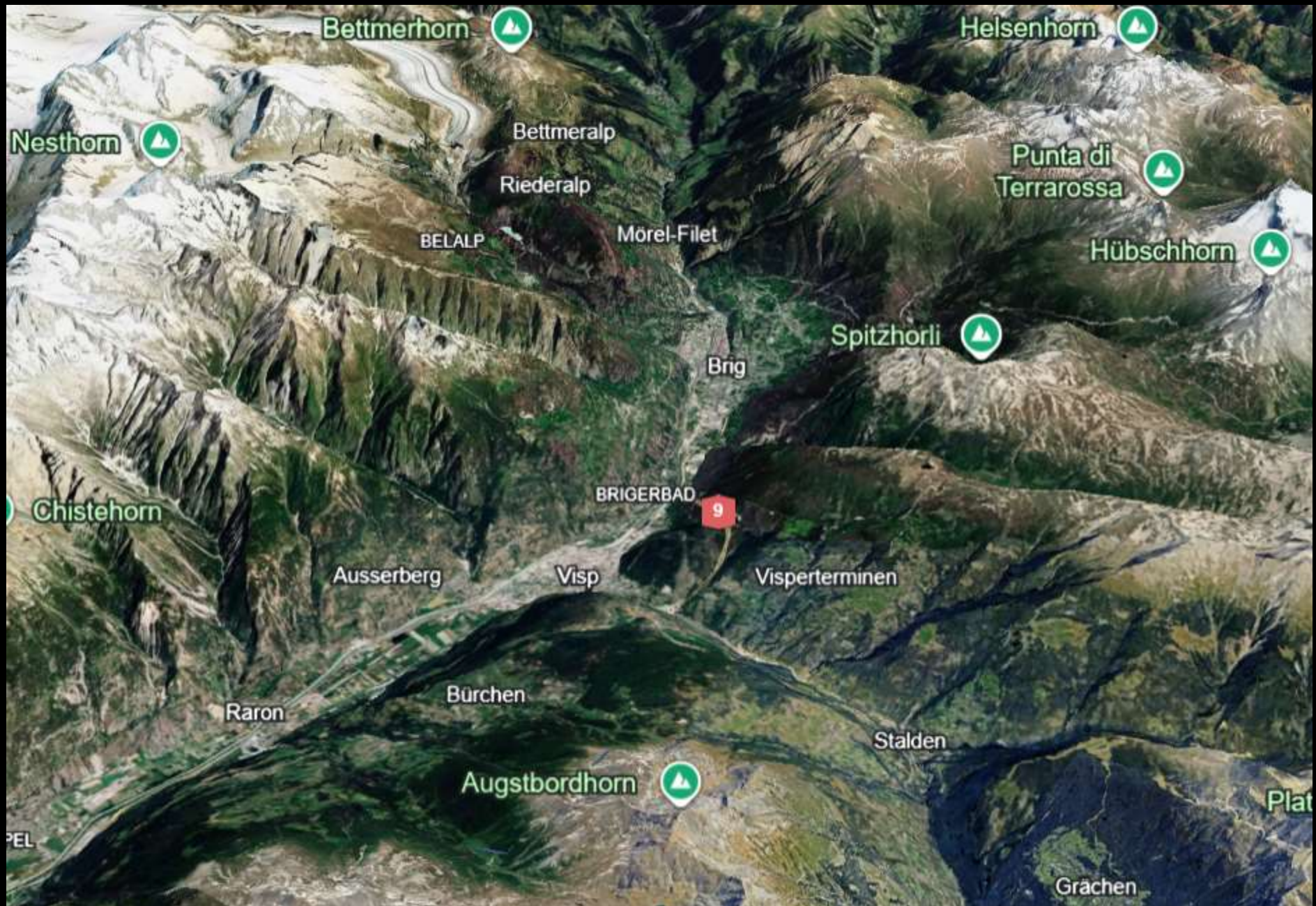
Pseudotachylite











Bettmerhorn

Helsenhorn

Nesthorn

Bettmeralp

Punta di  
Terrarossa

Riederalp

Hübschhorn

BELALP

Mörel-Filet

Spitzhorli

Brig

Chistehorn

BRIGERBAD

Ausserberg

Visp

Visperterminen

Raron

Bürchen

Stalden

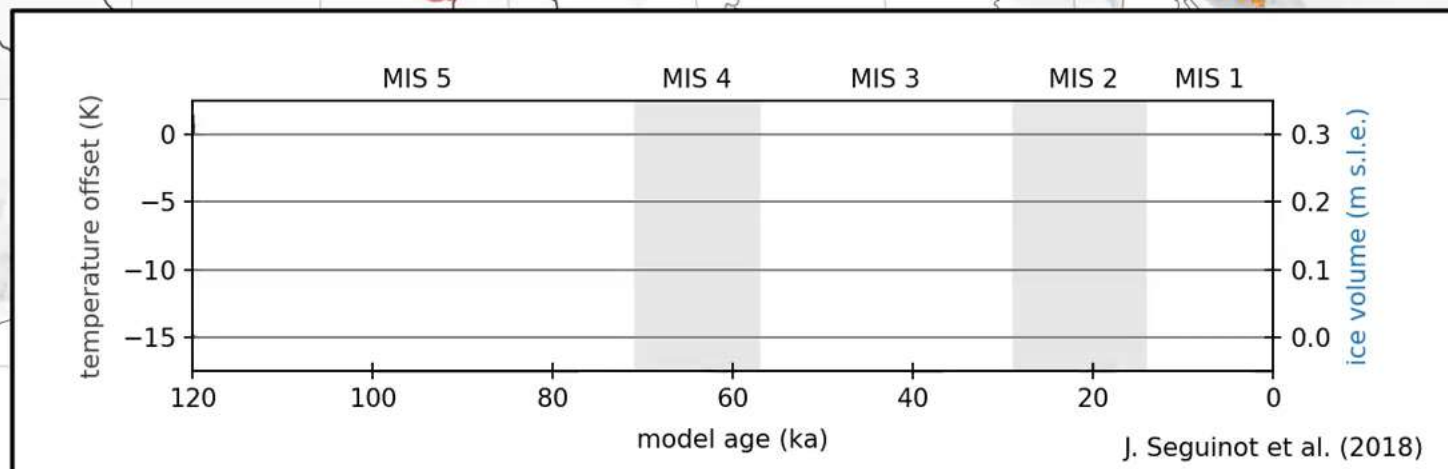
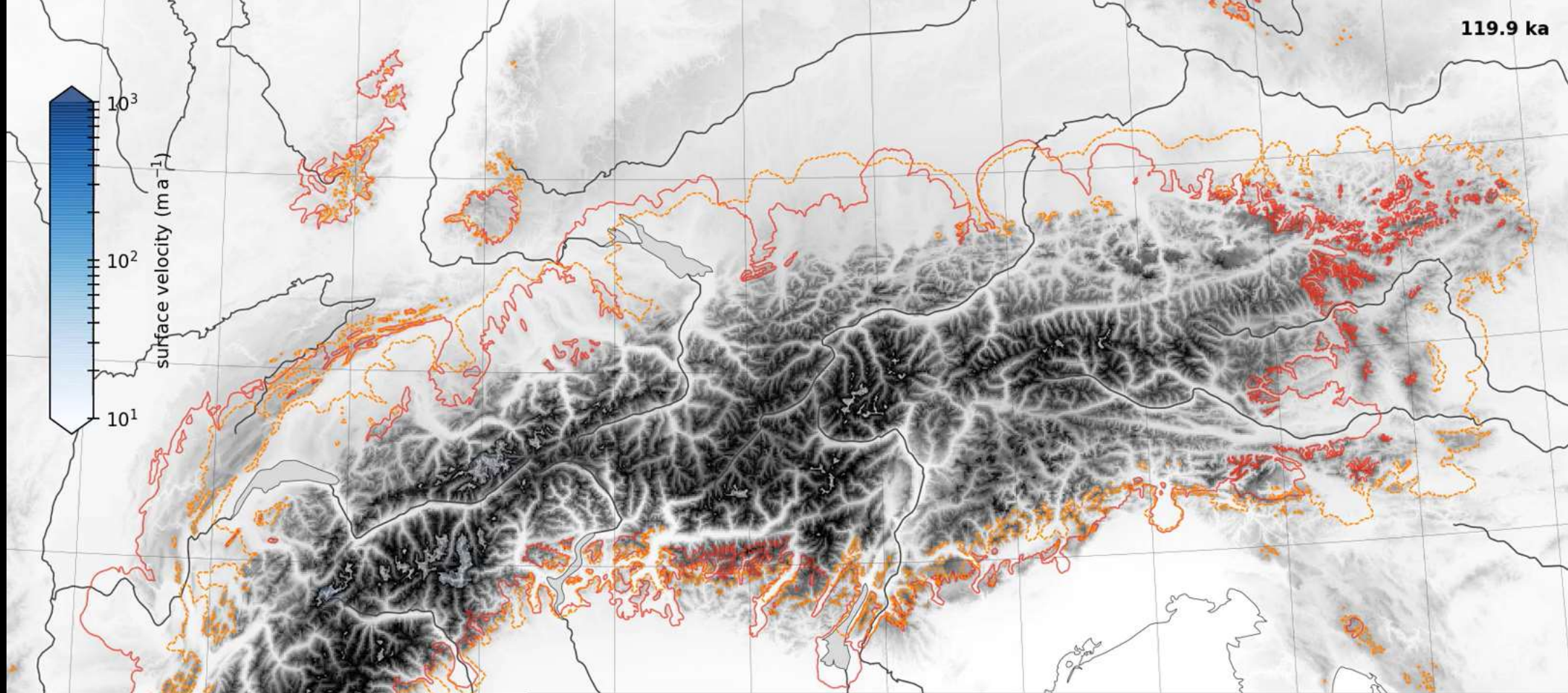
Augstbordhorn

Plat

PEL

Grächen

119.9 ka





THANK YOU!